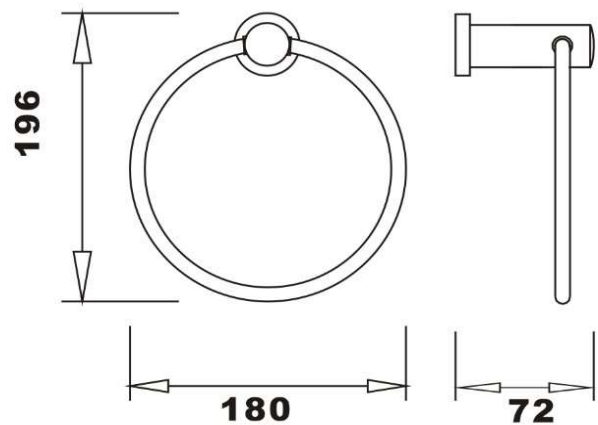


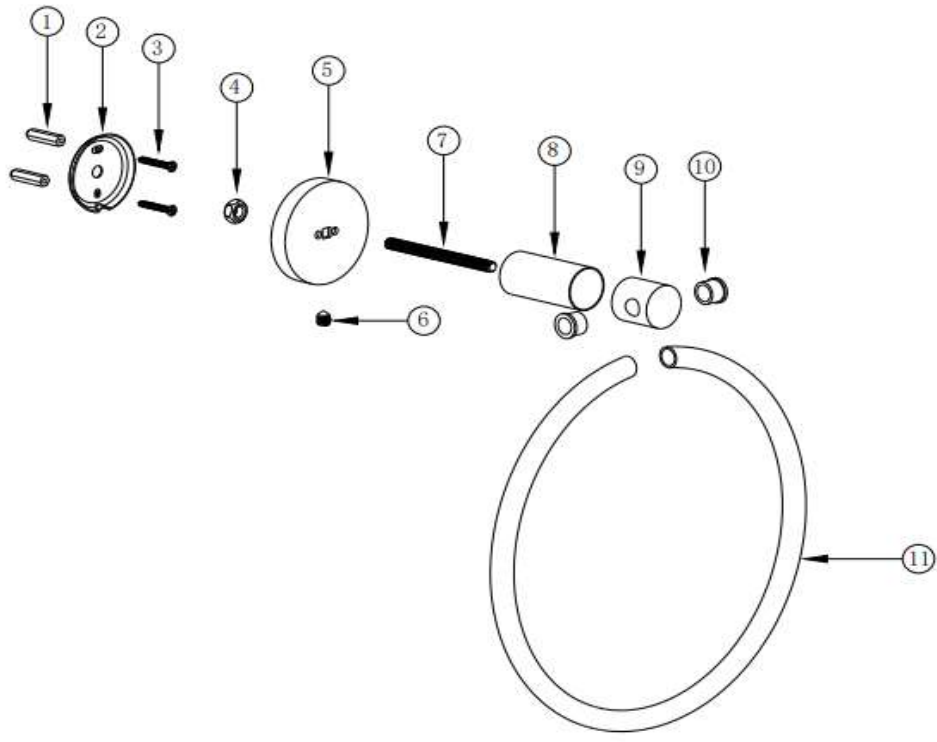
# TECHNICAL DATA SHEET

## DERL4030BB Brushed Brass Towel ring

<b>Barcode</b>	7427042698713
<b>Product Code</b>	DERL4030BB
<b>Construction</b>	Brass, Stainless Steel
<b>Finishes</b>	Brushed Brass
<b>Product Type</b>	Contemporary
<b>Water Pressure</b>	-
<b>Plumbing Systems</b>	-
<b>Standards</b>	-
<b>Certification</b>	-
<b>Fitting</b>	-
<b>Packaging</b>	41.5 x 37.5 x 42cm / carton (20 boxes), Dimension: 20 x 18 x 8cm / box; Weight: 0.295Kg / box
<b>Guarantee</b>	5 year against manufacturing faults (excluding Ceramic or Glass parts)
<b>Additional Information</b>	-



The information contained on this page was correct at date of issue. Fitting dimensions are provided as a guide only. Some variation may occur due to manufacturing tolerances. We pursue a policy of continuing improvement in design and performance of our products and so reserve the right to change specifications without prior notice.



NO.	DESCRIPTION	QTY
1-4	FITTING KIT	1
5	COVER PLATE	1
6	CAP	1
7	SCREW	1
8	EXTENSION LEVER	1
9	LOCK CAP	1
10	CAP	1
11	TOWEL RING	1

			Material:	Assembly	Size:	A4	
			(Date:D/M/Y)	Scale:	None	Issue No:	01
Drawn by:	Konstantine	28/06/2021					
Checked by:	Lee	28/06/2021					
Approved by:	T. K.	28/06/2021					
Drawing Name:							