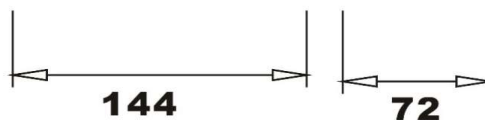
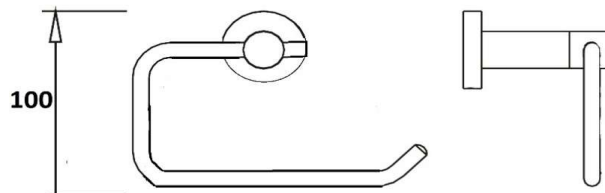


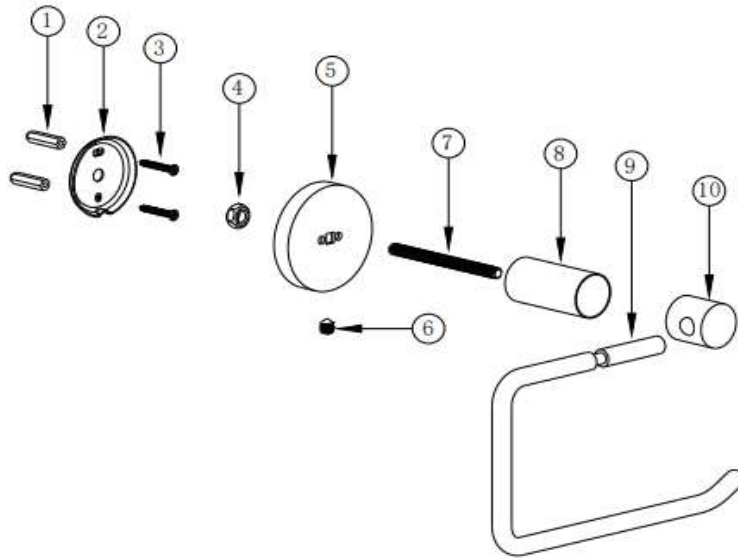
TECHNICAL DATA SHEET

DERL4031BB Brushed Brass Toilet roll holder

Barcode	7427042698720
Product Code	DERL4031BB
Construction	Brass, Stainless Steel
Finishes	Brushed Brass
Product Type	Contemporary
Water Pressure	-
Plumbing Systems	-
Standards	-
Certification	-
Fitting	-
Packaging	42 x 23 x 35cm / carton (20 boxes), Dimension: 16 x 11 x 8cm / box; Weight: 0.285Kg / box
Guarantee	5 year against manufacturing faults (excluding Ceramic or Glass parts)
Additional Information	-



The information contained on this page was correct at date of issue. Fitting dimensions are provided as a guide only. Some variation may occur due to manufacturing tolerances. We pursue a policy of continuing improvement in design and performance of our products and so reserve the right to change specifications without prior notice.



NO.	DESCRIPTION	QTY
1-4	FITTING KIT	1
5	COVER PLATE	1
6	CAP	1
7	SCREW	1
8	EXTENSION LEVER	1
9	TOILET ROLL HOLDER	1
10	TOWEL RING	1

			Material:	Assembly	Size:	A4
			(Date:D/M/Y)	Scale:	None	Issue No: 01
Drawn by:	Konstantine	28/06/2021				
Checked by:	Lee	28/06/2021				
Approved by:	T. K.	28/06/2021				
Drawing Name:						