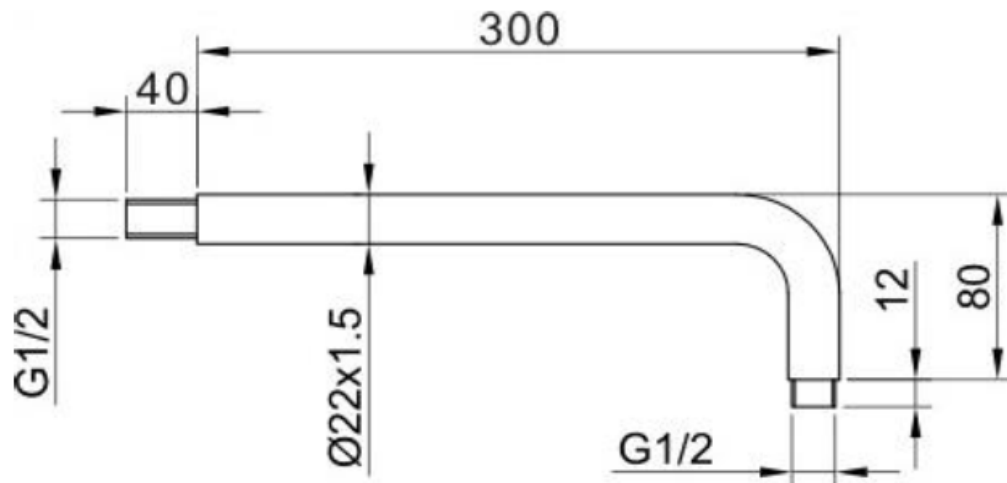


Technical Data Information
Round Black 300mm Shower Arm
AVSA01K

R.T. LARGE

ESTABLISHED 1969



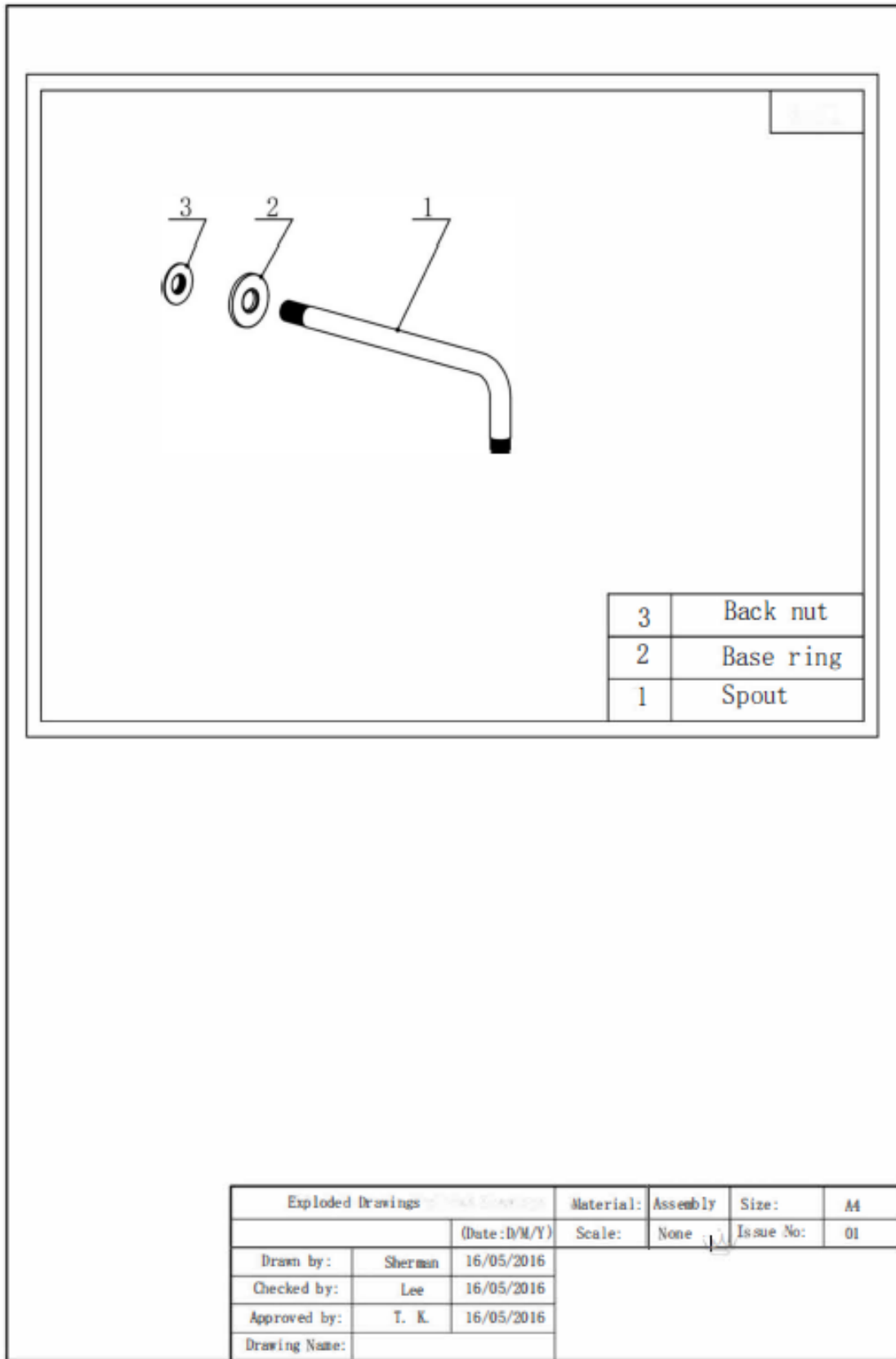
INFORMATION

Construction	Brass Body (CuZn40Pb18)
Finishes	Matt Black/ Electroplating finish
Product Type	Contemporary
Plumbing Systems	Suitable for all plumbing systems
Certification	Manufactured to comply with WRAS
Fitting	G1/2" BSP
Packaging	47 x 41 x 37cm / carton (50 boxes / carton)
Guarantee	10 year against manufacturing faults (excluding serviceable parts).
Additional Information	-

All Dimensions are in millimetres | All Dimensions in mm have a tolerance of ± 1 mm. The information contained on this page was correct at date of issue. Fitting dimensions are provided as a guide only. Some variation may occur due to manufacturing tolerances. We pursue a policy of continuing improvement in design and performance of our products and so reserve the right to change specifications without prior notice.

R.T. LARGE

ESTABLISHED 1969



3	Back nut
2	Base ring
1	Spout

Exploded Drawings			Material:	Assembly	Size:	A4	
			(Date: D/M/Y)	Scale:	None	Issue No:	01
Drawn by:	Sherman	16/05/2016					
Checked by:	Lee	16/05/2016					
Approved by:	T. K.	16/05/2016					
Drawing Name:							

All Dimensions are in millimetres | All Dimensions in mm have a tolerance of ± 1 mm. The information contained on this page was correct at date of issue. Fitting dimensions are provided as a guide only. Some variation may occur due to manufacturing tolerances. We pursue a policy of continuing improvement in design and performance of our products and so reserve the right to change specifications without prior notice.