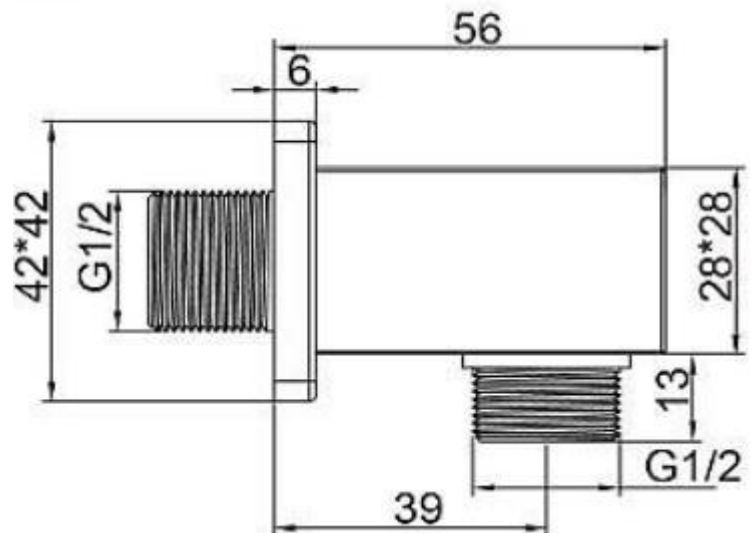


Technical Data Information

Square Black Outlet Elbow
AVWE02K

R.T. LARGE

ESTABLISHED 1969



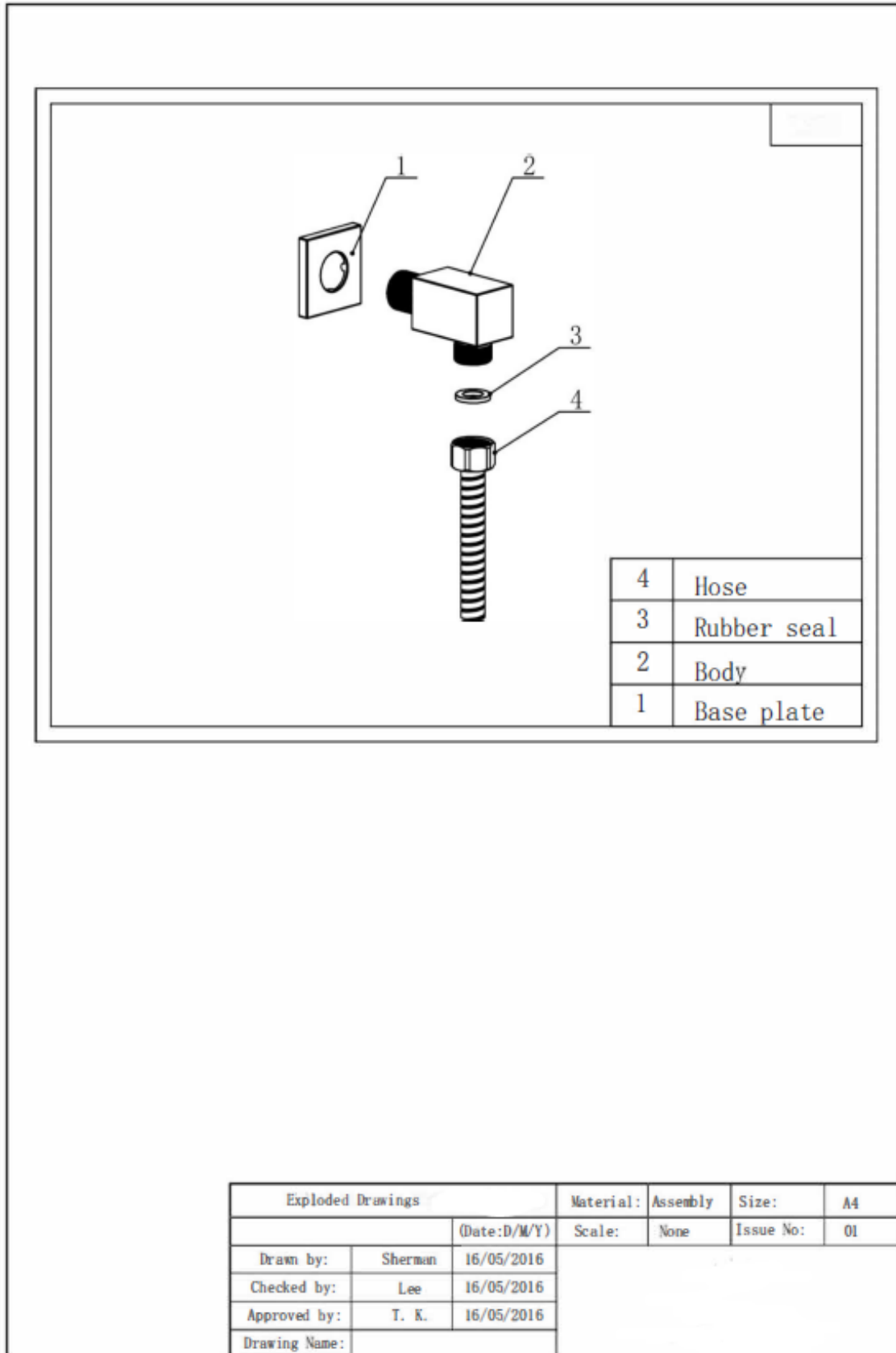
INFORMATION

Construction	Brass Body (CuZn40Pb18)
Finishes	Matt Black/ Electroplating Finish
Product Type	Contemporary
Water Pressure	-
Plumbing Systems	Suitable for all plumbing systems
Standards	-
Certification	Manufactured to comply with WRAS
Cartridge	-
Fitting	G1/2" BSP
Packaging	37.5 x 37.5 x 35cm / carton (125 boxes / carton)
Guarantee	1 year against manufacturing faults (excluding serviceable parts).
Additional Information	-

All Dimensions are in millimetres | All Dimensions in mm have a tolerance of ± 1 mm. The information contained on this page was correct at date of issue. Fitting dimensions are provided as a guide only. Some variation may occur due to manufacturing tolerances. We pursue a policy of continuing improvement in design and performance of our products and so reserve the right to change specifications without prior notice.

R.T. LARGE

ESTABLISHED 1969



All Dimensions are in millimetres | All Dimensions in mm have a tolerance of ± 1 mm. The information contained on this page was correct at date of issue. Fitting dimensions are provided as a guide only. Some variation may occur due to manufacturing tolerances. We pursue a policy of continuing improvement in design and performance of our products and so reserve the right to change specifications without prior notice.